

NETWORK MANAGEMENT

Today's end-user requirements of 'anytime, anywhere, any device' secure access to data and applications have resulted in virtualization becoming a necessity for enterprises. While virtualization has its own benefits, it affects all aspects of the network and has contributed significantly to a constant rise in network complexity. This necessitates the need for network professionals to manage the numerous ways in which virtualization affects the network, including I/O bottlenecks, bandwidth capacity problems and how virtual switches work in conjunction with the physical network.

As a recognized specialist in Cloud and Virtualization technologies, Anunta offers Network Management service which encapsulates fault analysis, performance management, network provisioning, periodic backup and high service quality maintenance.

What is Network Management?

- ▶ Network Management caters to both Campus LAN and Data Center LAN.
- ▶ It helps with management of all LAN switches from access layer to core layer, assuring optimum LAN performance.
- ▶ It includes Firewalls Management for security aspects of branches and data centers.
- ▶ Coupled with WAN Management, it assures end-to-end performance guarantee for Network and WAN Layer.

Why Network Management?

- ▶ **Fault Management:** Identification/isolation of outages over LAN/WAN for improved network functioning.
- ▶ **Software Maintenance/Upgrade:** Periodic preventive maintenance of network devices via OS and Patch Management.
- ▶ **Configuration Management:** Deployment of configuration changes via Change Management.
- ▶ **Performance Management:** Periodic monitoring of network performance parameters.
- ▶ **Device Lifecycle Management:** Regular tracking warranty and AMC of devices and vendor coordination. Annual check on EOL announcements and keeping customer updated for any replacements required for the upcoming year and model recommendations.
- ▶ **Change & Release Management:** Analyzing change requests. Planning and rolling out changes with minimal/no impact on business.
- ▶ **Backup Management:** Conducting periodic configuration backup of all network devices and OS.
- ▶ **History Maintenance:** Maintenance of device logs to identify network patterns and incident trends.
- ▶ **Security:** Prevention of unauthorized access to network devices and assess vulnerability reports.

Network Management includes:

WAN Management



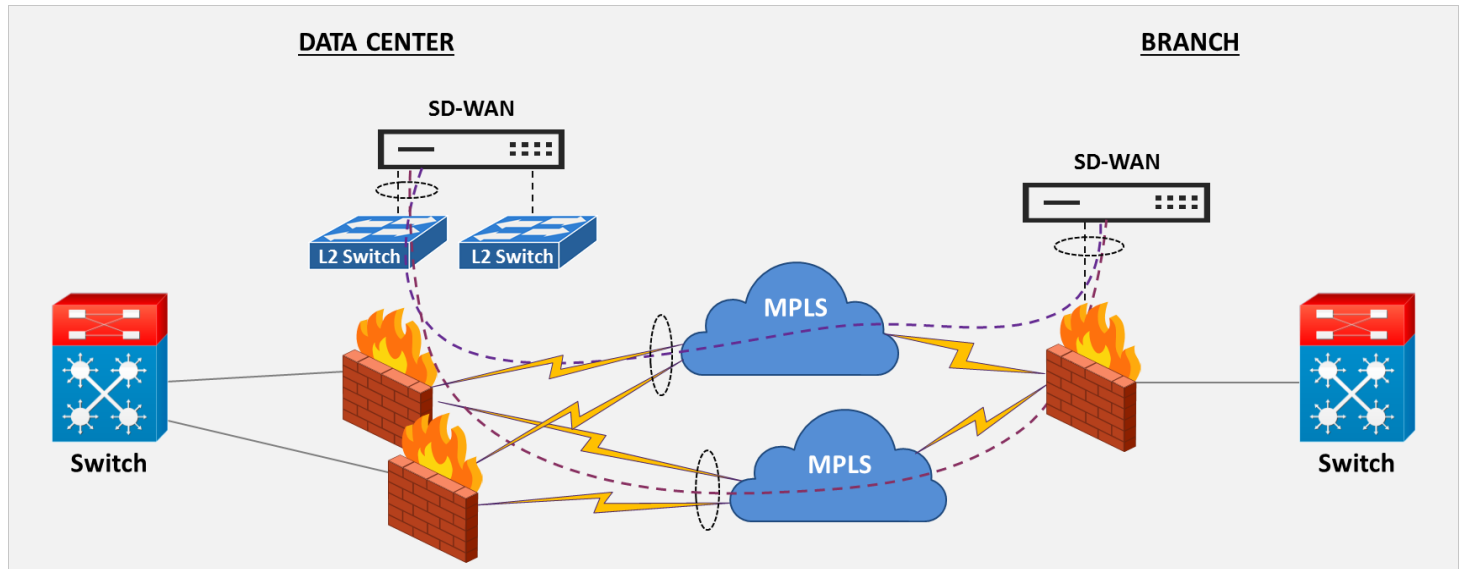
- ▶ WAN Management helps with maintenance of WAN links at peak performance levels.
- ▶ It includes handling all WAN Link alerts in the event of outages, engaging with link service providers to pinpoint the root cause of the outages and help in re-establishment of communications as quickly as possible.
- ▶ It provides utilization trends, outage statistics and service-level agreement compliance.
- ▶ It involves periodic review with service providers to ensure concerns on link stability and performance are addressed.

SDWAN Management



- ▶ SDWAN is next generation WAN connectivity solution for enterprises customer that provides agility, flexibility and ease of management of the entire network from a single user interface.
- ▶ It manages the available transport media and addresses key issues of 'last mile connectivity'.
- ▶ SDWAN provides users the flexibility to choose amongst various connectivity modes such as MPLS, Internet lease lines, Broadband, LTE dongle, etc., at each remote location depending upon their availability and quality.
- ▶ It also reduces the overall TCO of the entire network.

SDWAN Architecture



Network Management Benefits

- ▶ Single point of contact for all WAN Services, hassle-free coordination with multiple service/link providers.
- ▶ Regular WAN Capacity Management and recommended bandwidth optimization for optimum utilization.
- ▶ Regular Analysis of RISK over WAN connectivity and recommendations for RISK mitigation.
- ▶ Improved link efficiency by way of traffic re-engineering.
- ▶ Eliminate operational overhead of WAN link management.


About Anunta

Anunta is a specialized cloud services company, focused on end-user experience management in enterprise environments. Anunta helps enterprises move to new generation End-User Computing (EUC) environments and has extensive experience in enabling customers to adopt EUC on cloud at large scale. Anunta has migrated 80,000+ endpoints across 120,000+ users in companies across industries including, banking and financial services, manufacturing, travel, media, aviation and IT.

Few of our noteworthy Customers:

 Large global utility services company	 Top European insurance company
 One of the top global BPOs	 3 of top 5 private banks in India

Awards & Industry Recognitions:

	Gartner	
	Report on Multifaceted Monitoring Approaches for VDI and DaaS, 2016	IT Market Clock for IT Infrastructure Availability and Performance Management, 2016
	Hype Cycle for IT Infrastructure Availability and Performance Management, 2016	'Vendor to Watch' - Emerging Market Analysis: India's Top 10 Technology Trends and Drivers in 2014



To know more, email us at:
marketing@anuntatech.com | sales@anuntatech.com

Anunta Technology Management Services Ltd.
 Level 2, Block B6, Nirlon Knowledge Park, Off Western Express Highway,
 Goregaon East, Mumbai – 400 063.
 Tel: +91 22 66200888 | www.anuntatech.com